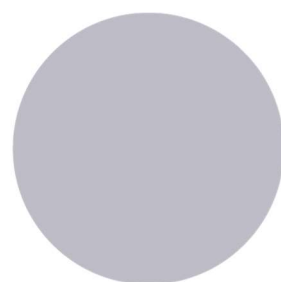
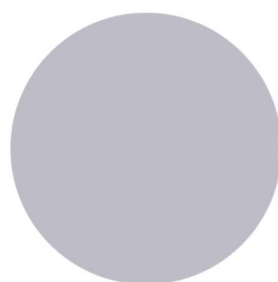
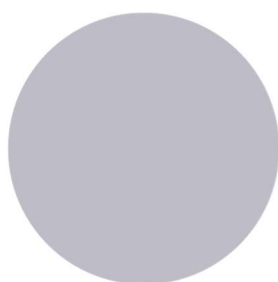




Scholarship Awards

13+
For Entry

September 2022



Bold & Loyal
1882...

Write your own story...

Scholarship Awards at Wycliffe

We are delighted to announce that a range of Scholarships are available for 13+ candidates applying for a place in Year 9 at Wycliffe in September 2022. We are looking for candidates who show excellence in academic, sporting, musical, dramatic, design and art disciplines.

Becoming a Scholar at Wycliffe will give you the:

- Recognition of your achievements
- Appreciation of your exceptional potential
- Status of being a Scholar within the College
- Enhancement of UCAS application and CV for future ventures
- New opportunities to influence school life
- Prospect of being a leader of the school and a good role model.

Write your own story...

Wycliffe Scholarships

Scholarship assessment takes place in the academic year before a pupil looks to join Wycliffe Senior School.

Pupils may apply for more than one scholarship during the assessment.

We offer the following scholarship awards at Wycliffe Senior School:

- ACADEMIC
- ART
- DRAMA
- DESIGN TECHNOLOGY
- MUSIC
- SPORT

Write your own story...

13+ Scholarship Assessments

Academic	During the week of 24 th January 2022
Art	During the week of 24 th January 2022
Drama	During the week of 24 th January 2022
Design Technology	During the week of 24 th January 2022
Music	During the week of 24 th January 2022

If you are interested in a Sports Scholarship, please contact Mrs Fiona Lawson-Best, Admissions Manager; fiona.lawson-best@wycliffe.co.uk

Write your own story...

Academic

Academic Scholarship candidates are assessed on their aptitude and potential across a range of disciplines. The Academic assessment is by way of an online Cognitive Ability Test, no preparation is advised for these tests, which are nationally standardised methods by which potential can be accurately measured and benchmarked. Scholarships are awarded bi-annually for 13+ entry.

Assessment: Online CAT test

Write your own story...

Art

Wycliffe College offer a number of Art Scholarships each year, with awards made on the presentation of a portfolio of artwork indicating potential as well as performance in the field of Art for example drawing, painting and printmaking. This should be displayed on an A1 Art board. However, evidence of creativity in other Art and Design disciplines is of interest.

Candidates will also be expected to produce a piece of work whilst in the Art School on Scholarship Day. This exercise will be followed by a brief interview with the Head of Art, where the candidate will discuss his or her portfolio including Personal work, schoolwork and sketchbooks.

Acceptance should indicate a genuine engagement with the subject and a willingness to make a leading contribution to the visual arts at Wycliffe in the field of Art.

Assessment: Portfolio and practical element to include production of a piece of work on the day

Write your own story...

Design Technology

Wycliffe offers Awards in Design Technology to 13+ candidates applying to Year 9 who are able to show a real interest and ability in the creative aspects of design and a good understanding of technology concepts. They should be able to exhibit a high level of graphical communication and craft skills.

Selection is in three stages:

1. A design examination of one-hour duration. No advance preparation is required.

- Candidates will be required to analyse a given design brief.
- Sketch two alternative designs that satisfy the specification provided.
- Review their ideas.
- Produce a final design that shows some development from the initial idea along with some technical knowledge of materials and construction methods.

They may want to bring a pencil case with their favourite drawing equipment.

2. A portfolio of Design Technology related work that the candidate has either produced at school or home, showing as full a range of experience as possible.

- It should include design drawings and an appreciation of the design process.
- Evidence if possible, of completed practical projects, ideally in a range of different materials (photographs accepted).

3. A brief interview with the Design Technology staff.

Assessment: portfolio of work and a one hour design exam and interview with Head of Design Technology.

Write your own story...

Drama

In assessing candidates for 13+ Scholarships we are looking for potential as much as actual achievement. They should indicate commitment and possess energy and ideas. Successful candidates are expected to make a special contribution to school life through their drama including taking part in the school production and to take full advantage of the opportunities on offer to develop their skills. They will study Drama to GCSE level, and it is hoped they will continue with A Level Theatre Studies in the Sixth Form. Selection is primarily by interview and audition speeches. Candidates may offer either acting or design for assessment.

All candidates will be expected to talk about a theatrical production they have seen in the last year, in a short interview with the Head of Drama. Additionally, acting candidates should prepare a short piece to perform, of approximately two minutes' duration, from a play of their own choice. Design candidates should produce a log book including sketches of set, costumes or lighting from a play of their own choice.

Assessment: a short review of a theatrical production and performance of a short pre-prepared piece of two minute duration.



Write your own story...

Music

Music occupies a central position in life at Wycliffe with all pupils taking part in some musical activities during the year. Weekly musical activities include Chapel Choir, VOX (our advanced vocal group), Orchestra, Flute Group, String Group and Jazz Band. Much of the music for these groups is especially arranged bespoke for the specific players involved. Rehearsals for the music groups usually take place during lunchtimes or as part of the Activities.

There are services, concerts and performances of music throughout the year, both inside and outside of school. There is an annual House Song Evening that includes all of the pupils in the school, as well as a biannual House Music Competition. We also organise masterclasses and workshops to stretch and inspire our musicians, one of which was run by Voces8.

Facilities include a dedicated Music Department building with teaching rooms, a main teaching and rehearsal room. For those with an interest in popular music and production, we have a Music Technology Suite and recording studio equipped with Macs running the latest software for sequencing and recording. We also hold Gig Nights to encourage a wide variety of music-making, and organise trips to see live performances of music in a range of different styles.

Auditions involve candidates performing two contrasting pieces on their first instrument and one piece on their second instrument (if any), together with sight-reading and ear tests. Candidates who are not offering voice as their first or second instrument are encouraged, if possible, to prepare a song.

Wycliffe supports talented musicians through Music Scholarships that help develop and nurture musical potential. Music Scholars form the core of the ensembles and therefore have a very important role in the Department.

Wycliffe is a friendly place and we try to make candidates feel at home, for this reason, the Director of Music, Mrs Gemma Russell, is always pleased to meet prospective candidates and their parents at any time prior to the assessment.

Write your own story...

Sport

At 13+ and Sixth Form entry level we are looking for games players whose performance is of a very high standard at school level. Candidates are likely to be playing sport at county representative level or above, or they should demonstrate the potential to do so should their current circumstances not allow representative sport.

There would be an expectation of a high level of commitment to all spheres of sport at Wycliffe. Sports Scholarship Awards will be made on the demonstration of potential in two or more of the major team sports at 13+ and in one or more of the major team sports at Sixth Form.

Major Sport at Wycliffe

13+ and Sixth Form			Sixth Form
• Rugby	• Hockey	• Netball	• Rowing
• Cricket	• Football	• Tennis	
• Squash			

Applicants should be outstanding at first team level at school or club, in at least one of the sports listed above. Ability in other sports may also be considered:

Selection will be made through assessment in various fitness testing as well as performance in the selected sports. Supporting evidence of previous accomplishments in sport, in the form of references should be submitted with your application or at the interview.

We will require references at 13+ and Sixth Form in all your major sports and a person statement – why you deserve the title of Scholar.

Write your own story...

Frequently Asked Questions...

How do pupils apply for an award?

Pupils should complete the Application form(s) and write a Letter of Application and return these by the deadline date. External candidates will also need to register with Wycliffe and provide a copy of their current school report.

Can international pupils apply for a scholarship?

We encourage and welcome scholarship applications from international pupils. Special arrangements are made if the pupil is unable to attend the assessments due to travel issues.

What is a Letter of Application?

The Letter of Application is a letter written by the pupil and addressed to Mr Gregory, Headmaster. The letter explains why the pupil would merit the title 'Scholar' and how being a Scholar would make a difference to our Wycliffe community.

What are the value of the awards?

The awards are made on an individual basis and are determined by the calibre and potential of successful applicants.

Can you give me an indication of when I am likely to receive the results for the scholarships?

The results are posted via first class post, usually within a week after the end of the scholarship assessments have taken place.

Do previous awards continue into Sixth Form?

Scholarships are held for the duration of a pupil's time in Senior School, provided his or her conduct is satisfactory and his or her level of work and commitment is in line with the expectations of a Scholar.

Can a pupil who was awarded a scholarship in the first round apply for another scholarship in the second round?

At Wycliffe pupils have the opportunity of two scholarship assessment dates for both the 13+ Scholarships and the Sixth Form Scholarships, with the exception of the Sports Scholarship which has one assessment date only. Pupils may apply again in the second round of scholarship assessments if they believe they have made significant improvement (with exception of All -Rounder).

Write your own story...

Deadline for Application

JANUARY ASSESSMENT

Deadline for submitting applications for **13+ January Assessment** is:

MONDAY 17TH JANUARY 2022

Completed applications should be sent to:

By email to: Mrs Fiona Lawson-Best, Admissions Manager
fiona.lawson-best@wycliffe.co.uk

By post to: Mrs Fiona Lawson-Best, Wycliffe College, Admissions, 32 Regent
Street, Stonehouse Glos. GL10 2AD.

Write your own story...

Scholarship Application Form

Surname:	Forename:
Current School:	

PLEASE TICK THE SCHOLARSHIP(S) YOU WISH TO APPLY FOR:	<input type="radio"/> ACADEMIC
	<input type="radio"/> ART
	<input type="radio"/> DESIGN TECHNOLOGY
	<input type="radio"/> DRAMA
	<input type="radio"/> MUSIC

PLEASE INDICATE WHICH ASSESSMENT DATE YOU ARE APPLYING FOR:	<input type="radio"/> SEPTEMBER 2021
	<input type="radio"/> JANUARY 2022

How to apply for a Scholarship

Please complete the above information and submit this form by the deadline date for assessments (see separate page for date).

For Music and Languages, please also complete the relevant application(s) forms.

Non-Wycliffe Applications

We also require a completed registration form, payment of the registration fee along with a copy of the applicants' most recent school reports and a visiting pupil medical form.

All applicants must submit a Letter of Application explaining why they merit the title of 'Scholars' – if applying for multiple scholarships one letter will cover all disciplines.

Write your own story...

MUSIC SCHOLARSHIP APPLICATION FORM

Applicant's Name	
Applicant recommended by? (Director of Music or another Music Teacher)	
Instrument(s) and Grades passed, with marks and dates:	
If no examination taken, indicate for how long lessons have been taken and approximate Grade:	
Theory examinations taken, with grades and marks;	
Will the applicant offer singing? If so, please give brief details of experience:	

Please also provide a reference from your Head of Music at your current school or Private Music Tutor. Please continue on a blank page if required.

Write your own story...

SPORT SCHOLARSHIP APPLICATION FORM

Surname:	Forename:
Current School:	

The main sports played at Wycliffe:

13+

BOYS		GIRLS	
• Rugby	• Football	• Netball	• Hockey
• Cricket	• Tennis	• Tennis	• Cricket
• Squash		• Squash	

Sixth Form

BOYS		GIRLS	
• Rugby	• Rowing	• Netball	• Hockey
• Cricket	• Football	• Tennis	• Cricket
• Squash		• Squash	• Rowing

Please state Wycliffe sport(s) being offered for assessment and level played in order of ability (maximum of 3 sports):

13+	SIXTH FORM
1.	1.
2.	2.
3.	3.

Please outline sporting achievements outside of Wycliffe main sports:

Please provide references separately from Club/School or County Coaches to support this application.

Write your own story...